

*Keller Williams Excellence Realty  
Proudly Presents*



*602 Meadowridge Road  
Towson, MD 21204*

*Riderwood Ridge*

[www.602Meadowridge.com](http://www.602Meadowridge.com)



*Presented by*

*Marney Kirk  
RealtorMarney*



*Website: [www.realtormarney.com](http://www.realtormarney.com)  
E-mail: [realtormarney@yahoo.com](mailto:realtormarney@yahoo.com)*

*Cell: 410-493-4884*

*1850 York Road, Suite K  
Lutherville, MD 21093  
410-560-5858*



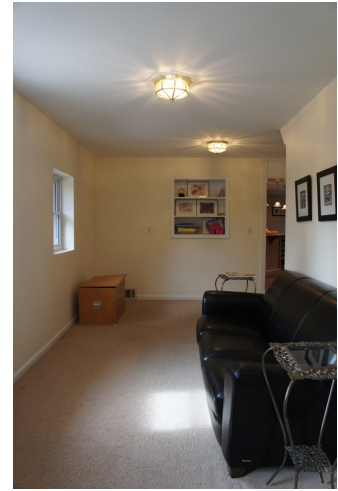
*Each Office Independently Owned and Operated*

# First Floor Features

LIVING ROOM 24x10  
Bow Window  
Hardwood Floor  
Built-in Shelves  
Fireplace



FAMILY ROOM 22x11  
Wall-to-Wall Carpet  
Two Entrances  
Door to Basement



KITCHEN 20x18  
Gorgeous Custom Kitchen  
Sparkling Hardwood Floors  
Breakfast Bar  
Granite Counters  
Recessed Lights  
Wine Fridge  
Five-Burner Gas Cooktop  
Side-by-side Refrigerator with Ice & Water  
Dispenser  
Custom Cabinets



DINING AREA 20x9  
Open to Kitchen  
Gorgeous Hardwood Floors



MUD ROOM  
Built-in shelves  
Granite Counter with sink  
Side entrance

BACKYARD  
Trex Deck  
Fenced, level Yard  
Playset remains  
Shed



SCREENED PORCH  
Half Door  
Ceramic Tile Floor  
Two Entrances

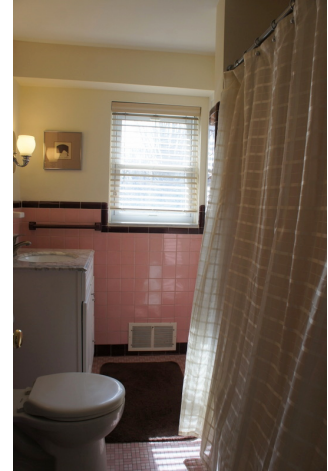


# First Floor Features Continued

FIFTH BEDROOM 12x11  
Hardwood Floor  
Two Windows  
Double Closet



FULL BATH



FOURTH BEDROOM 12x9  
Hardwood Floor  
Two Windows  
Double Closet



# Second Floor Features

MASTER BEDROOM 19x15  
Wall-to-Wall Carpet  
Ceiling Fan  
Two Double Closets



MASTER BATH  
Cabinet Sink  
Shower



LAUNDRY ROOM  
Wash Tub  
Closet

SECOND BEDROOM 17x22  
Wall-to-Wall Carpet  
Two Single Closets



THIRD BEDROOM 14x13  
Wall-to-Wall Carpet  
Double Closet



THIRD FULL BATH  
Cabinet Sink  
Tub



LARGE, OPEN HALLWAY 21x10  
Wall-to-Wall Carpet  
Built-in Shelves