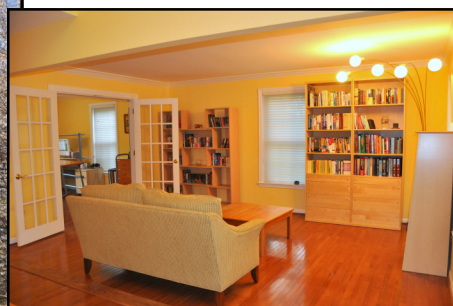


Keller Williams Excellence Realty

Proudly Presents



\$499,900

19 Clarion Court

The Abbey at Sherwood

www.19ClarionCt.com

Presented by Marney Kirk & Jennifer Ward



realtormarney@yahoo.com

jennifer_ward@earthlink.net

www.realtormarney.com

www.jenwardrealtor.com

Cell: 410-493-4884

Cell: 410-627-5961



Keller Williams Excellence

1850 York Road, Suite K, Lutherville, MD 21093

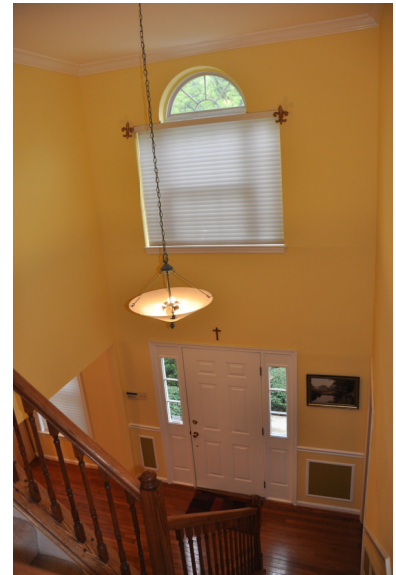
Office: 410-560-5858



First Floor Features

FOYER

Two Story
Hardwood Floor
Six Paneled Front Door
Chair Rail & Picture Molding



STUDY/LIBRARY 12x11

Hardwood Floor
Crown Molding
Six Paneled Door



POWDER ROOM

Hardwood Floor
Cabinet Sink



MUD ROOM

Wood Floor
Built-in Cabinets and drawers
Built-in Hanging Hooks & Storage



LIVING ROOM 16x12

Hardwood Floor
Crown Molding
French Doors to Dining Room

DINING ROOM 12x12

Hardwood Floor
Crown Molding & Chair Rail
Double Six Paneled Doors to Kitchen
Double Rear Window

First Floor Features Continued

KITCHEN

21x10

Gourmet — Completely Redone March 2009!

Wood Floor

Wood Block Counters

Electrolux 36" Flat Top Five Burner Cooktop

Stainless High Powered Exhaust Fan

KitchenAid Stainless Dishwasher with extra deep lower rack for large pots & pans

Fridgidaire Professional Series EvenCook Wide Stainless Convection Oven

Floor-to Ceiling Cabinets with organizational drawers and built-in lazy susans

Stainless Sink & Washboard with In-Sink-Erator

Sprayer Faucet

Recessed Lighting

Custom Curtains

Pantry Closet



BREAKFAST ROOM/EATING AREA

Wood Floor

Open to Family Room and Kitchen

Bump-Out Bay Window

Custom Curtains



FAMILY ROOM 21x16

Wood Floor

Cathedral Ceiling

Recessed Lights

Track Light Spotlights on Fireplace

Wood-Burning Fireplace with Marble surround and mantle

Custom Mantle Pillow

FRENCH DOORS TO DECK

EXTRA LONG DECK

Built-in Hot Tub/Spa

Overlooks Wooded Area

Steps Down to Yard



All information contained is deemed reliable but not guaranteed by Broker.

Second Floor Features

MASTER BEDROOM 21x14

*Double Door Entry
Wall-to-Wall Carpet
Ceiling Fan with Light
Walk-in Closet
Second Quadruple Door Closet*



MASTER BATH

*Two Person Soaking Tub — Garden Bath
Separate 6' Shower Stall with Sliding Glass Doors
Double Cabinet Sinks
Exhaust Fan
Mirrored Wall*



SECOND BEDROOM 17x12

*Former Master Bedroom
Cathedral Ceiling
Ceiling Fan with Light
Wall-to-Wall Carpet
Double Closet*



THIRD BEDROOM 11x11

*Double Closet
Wall-to-Wall Carpet*



SECOND FULL BATH

*Cabinet Sink
Tub*

Lower Level Features

RECREATION ROOM

28x18

Berber Carpet

Recessed Lighting

Large & Open Room

Tile Floor to Double Door Walk-out Exit



POSSIBLE FOURTH BEDROOM 21x13

Perfect for Au-Pair Situation or older child

Large with full living area with couch, desk space

Recessed and Up-lighting

Berber Carpet



FULL BATH #3

Marble Floor

Shower Stall

DEN/STORAGE ROOM 12x10

Berber Carpet



LARGE WALK-IN CLOSET/FORMER WINE CELLAR

Glass Door Entry

Recessed Lighting

Tile Floor

Closet Hanging System

UTILITY AREA
Maytag Washer & Dryer
Trane HVAC with
Honeywell humidifier
White Admiral Refrigerator
Sump Pump

Amenities + Exterior Features

9' Ceilings Throughout

Extra Large Lockable Storage under Deck with Lattice

Swingset remains as-is without tarp

Extra Parking Pad in addition to Two Car Garage and driveway

Six Paneled Doors Throughout

2682 sq ft up, 1550 sq ft fin Lower Level



Stainless Refrigerator in Kitchen Excluded

All information contained is deemed reliable but not guaranteed by Broker.