







# The Towson Mews Townhomes at

TOWSON, MD 21286



*Starting with 3 Bedrooms, 2 Full Baths & 2 Powder Rooms  
End Unit: 2,312 Square Feet  
End Units*

Evergreene  
HOMES



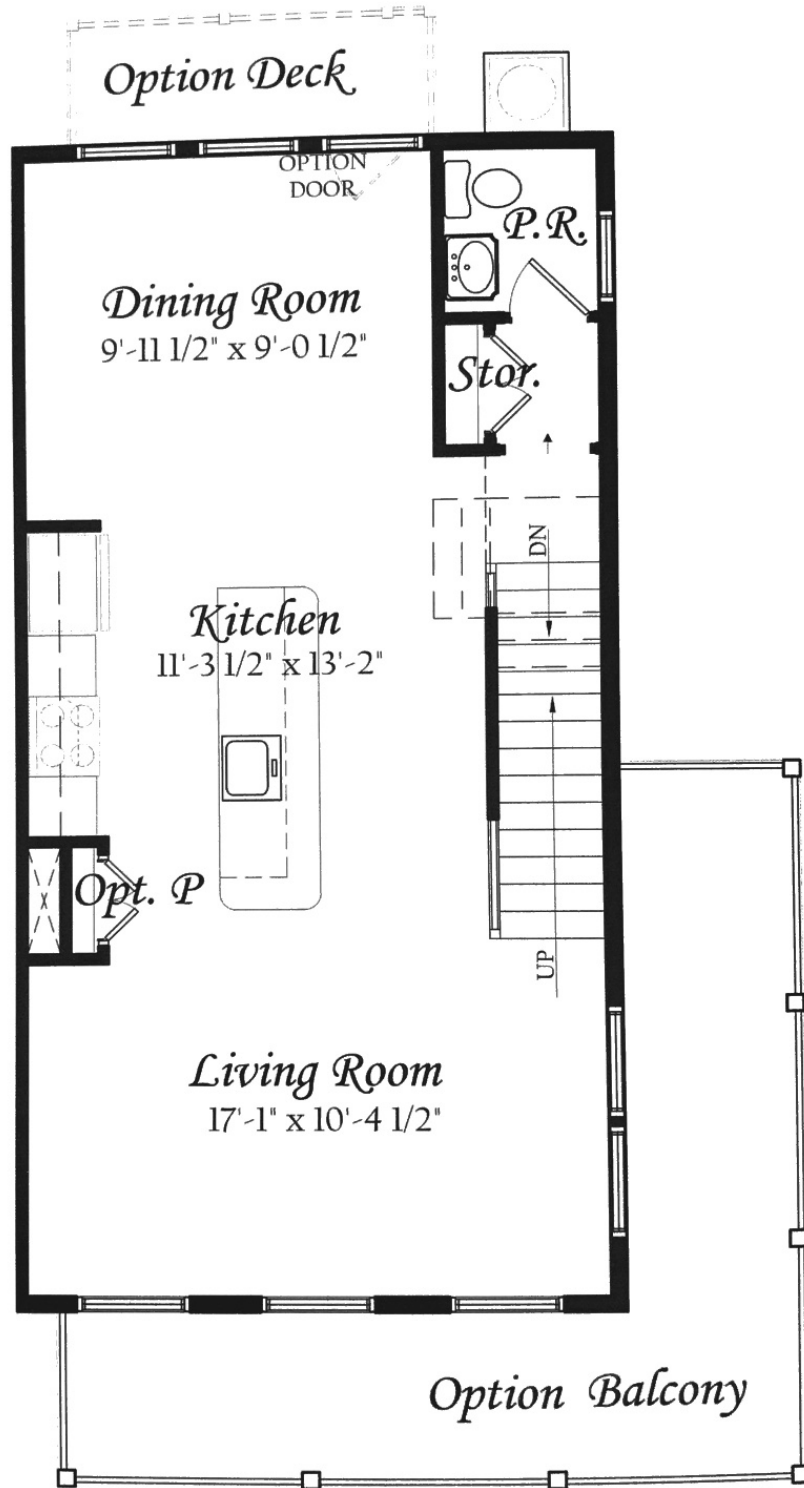
855.542.3224

[Sales@EvergreeneHomes.com](mailto:Sales@EvergreeneHomes.com)  
[MyEvergreeneHome.com](http://MyEvergreeneHome.com)



# Second Level

END UNIT. TOWSON MEWS, TOWSON, MD 21286

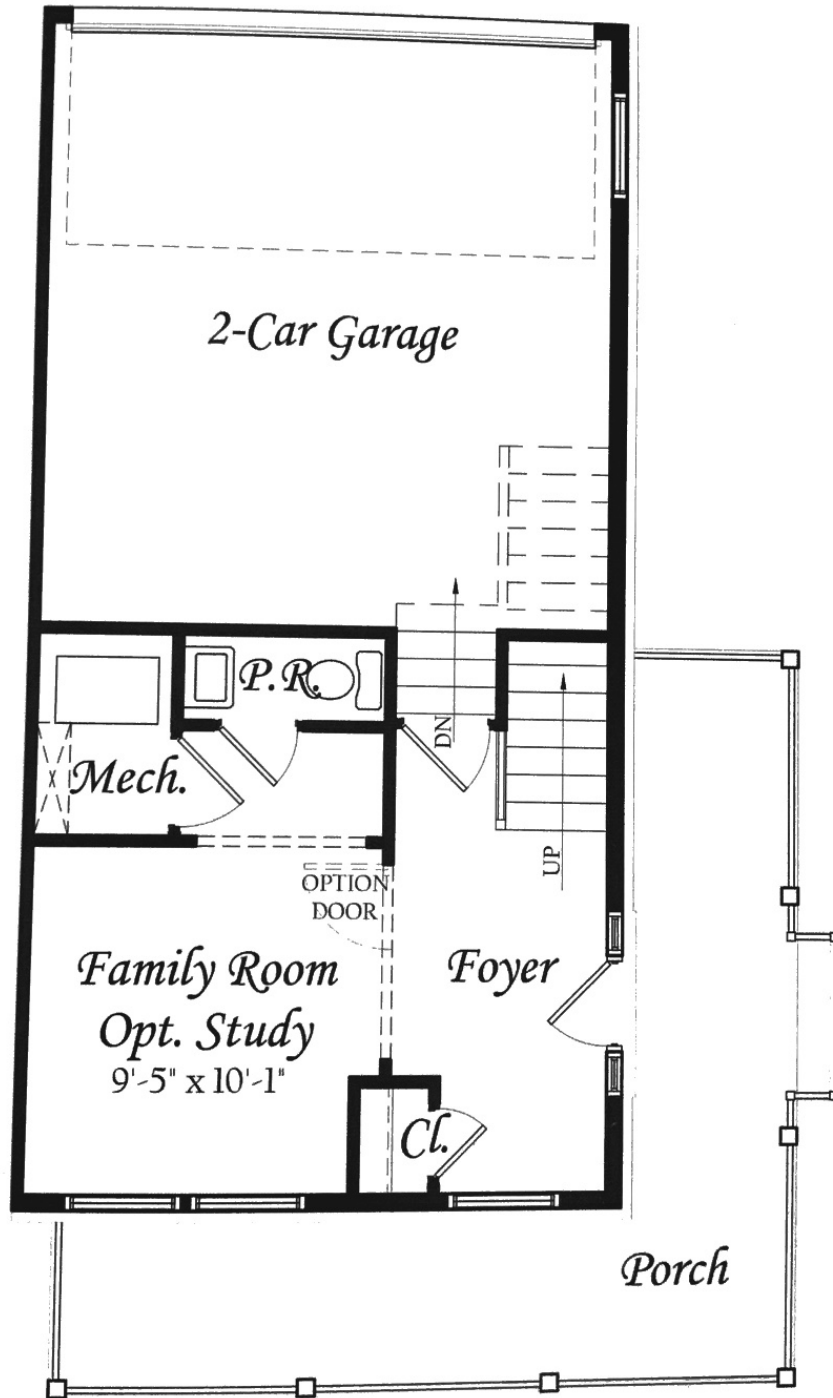


Standard Second Level - Elevation "B" w/ Optional Deck & Balcony



# Ground Level

END UNIT. TOWSON MEWS, TOWSON, MD 21286



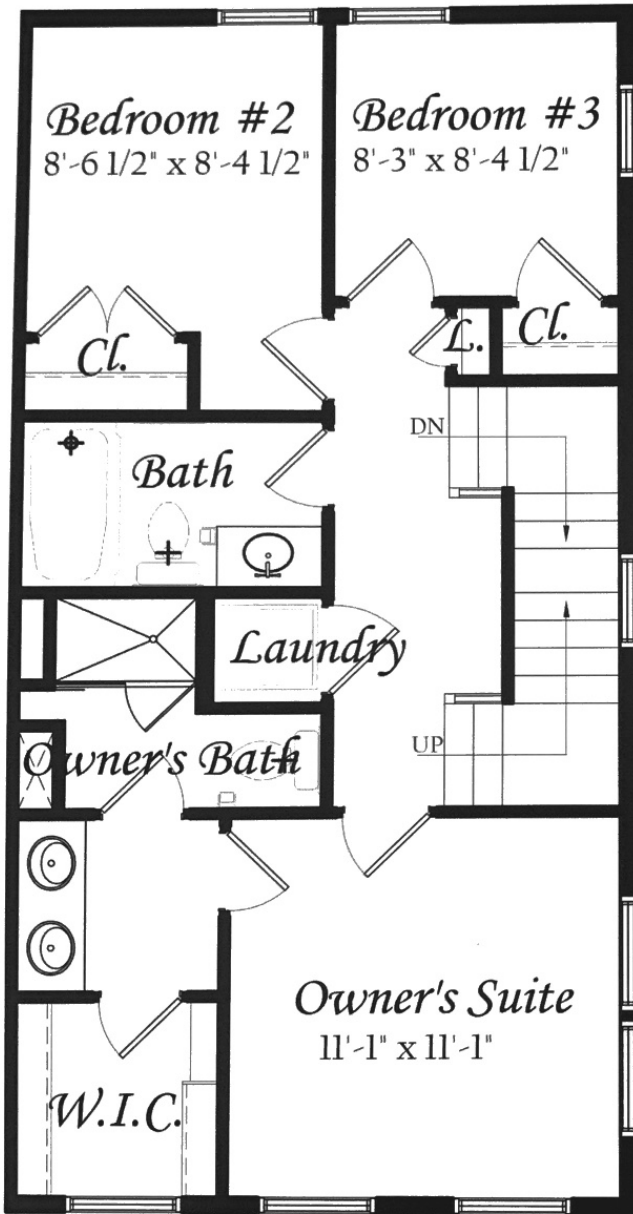
Standard Ground Level - Elevation "B"

Standard Ground Level

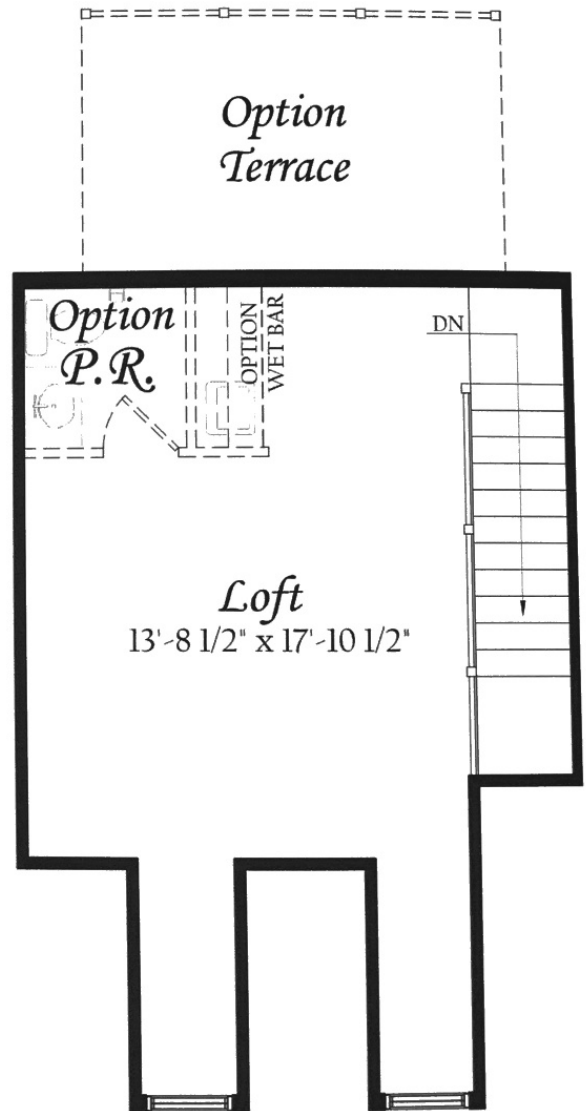


# Third Level & Loft Level

END UNIT. TOWSON MEWS, TOWSON, MD 21286



Standard Third Level



Standard Loft Level- Elevation A



The builder reserves its right to change, upgrade or alter its plans, specifications and materials without notice or obligation. Illustrations are conceptual and all dimensions are approximate. See sales representative for details. Options as indicated are available at additional cost and may not be available in all locations. This brochure is for illustrative purposes only and is not part of a legal contract. Photography may not represent exact home type available.

MHBR No. 6243  
05-24-2016  
END - JCD