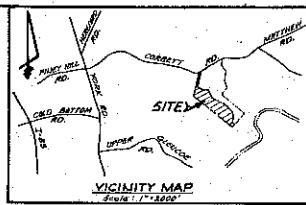
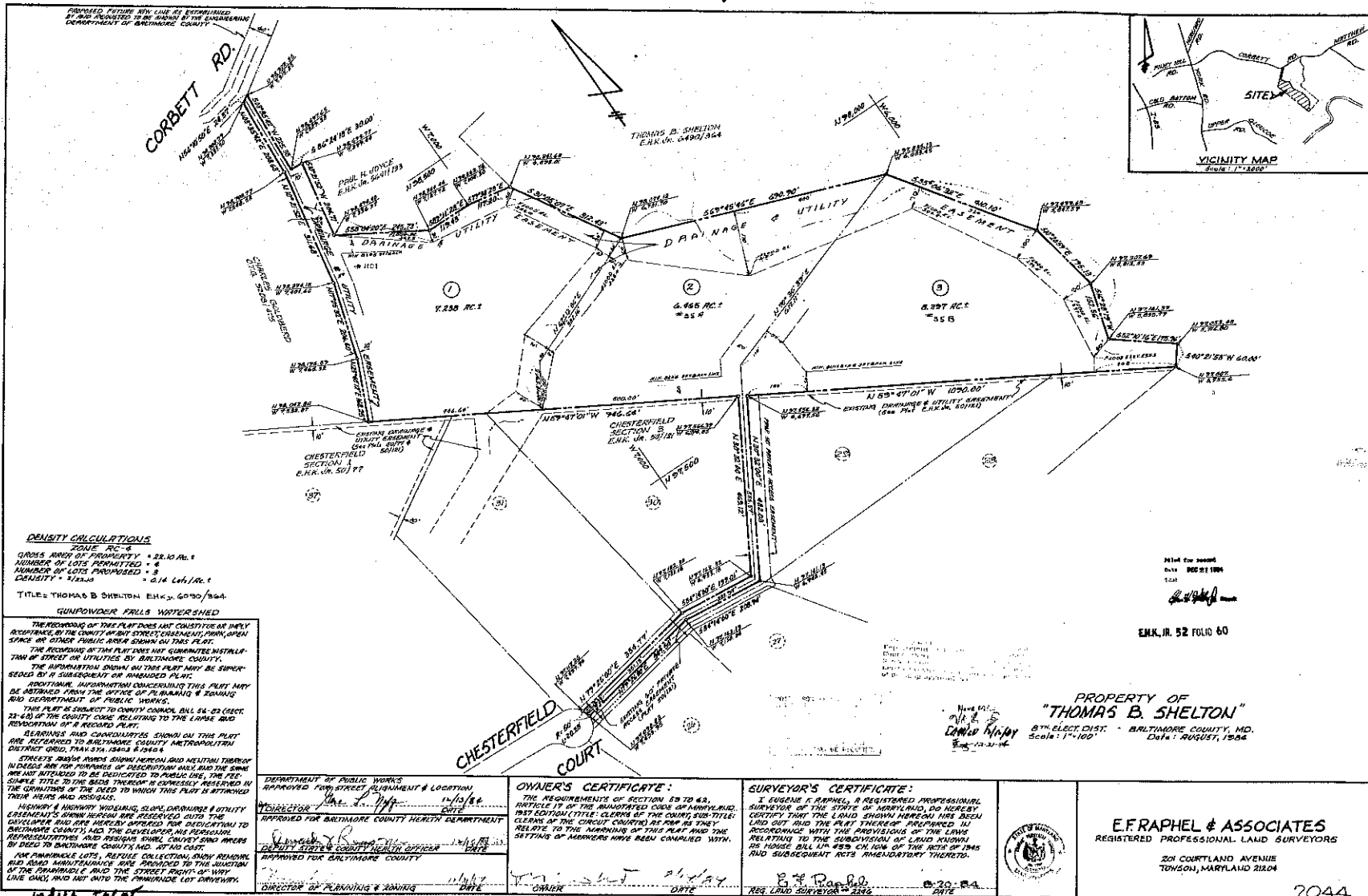


Plat #2 is 35A Chesterfield Court, Monkton, MD 21111 from original Thomas B. Shelton Survey



**DENSITY CALCULATIONS**  
 ZONE: RC-6  
 GRADES AND/or PROPOSED: 22.10 AC.±  
 NUMBER OF LOTS PERMITTED: 4  
 NUMBER OF LOTS PROPOSED: 3  
 DENSITY: 1.33/AC.±  
 TITLE: THOMAS B. SHELTON E&K. 23, 6070/364

**RECORDING OF THIS PLAT DOES NOT CONSTITUTE AN IMPLY**  
 ACCEPTANCE BY THE COUNTY OF ANY STREET CORRECTIONS, OPEN  
 SPACE OR OTHER PUBLIC AREA SHOWN ON THIS PLAT.  
 THE RECORDING OF THIS PLAT DOES NOT GUARANTEE INSTALLA-  
 TION OF STREET OR UTILITIES BY BALTIMORE COUNTY.  
 THE INFORMATION SHOWN ON THIS PLAT MAY BE SUPERSEDED  
 BY A SUBSEQUENT OR AMENDED PLAT.  
 ADDITIONAL INFORMATION CONCERNING THIS PLAT MAY  
 BE OBTAINED FROM THE OFFICE OF PLANNING & ZONING  
 AND DEPARTMENT OF PUBLIC WORKS.  
 THIS PLAT IS SUBJECT TO COUNTY CODES, BILL 54-23 (SECT.  
 23-43) OF THE COUNTY CODE RELATING TO THE LAYING AND  
 RESURFACING OF A RECORD PLAT.  
 BEARINGS AND COORDINATES SHOWN ON THIS PLAT  
 ARE REFERENCED TO BALTIMORE COUNTY METROPOLITAN  
 DISTRICT GRID, TRANS. 1104 8/28/64.  
 STREETS, DRIVEWAYS, DRIVEWAYS AND NEUTRAL TERRACE  
 INDICES ARE FOR PURPOSES OF DESCRIPTION ONLY AND THE SAME  
 ARE NOT INTENDED TO BE DEDICATED TO PUBLIC USE, THE FEAS-  
 IBLE TITLE TO THE BIDS THEREIN IS EXPRESSLY RESERVED IN  
 THE QUANTITIES OF THE ACRE TO WHICH THIS PLAT IS ATTACHED  
 THEIR HEIRS AND ASSIGNS.

HEAVY & HIGHWAY WORKING, DRAINAGE & UTILITY  
 ELEVATIONS SHOWN HEREON ARE REFERENCED TO THE  
 DATUM AND ARE HEREBY APPROVED FOR DEPOSITION TO  
 BALTIMORE COUNTY AND THE DEVELOPER HIS PERSONAL  
 REPRESENTATIVES AND DESIGN ENGINEERS AND ARCHITECTS  
 BY DEED TO BALTIMORE COUNTY, MD. AT NO COST.  
 FOR FINANCIAL LOTS, REFUSE COLLECTION, SNOW REMOVAL,  
 AND ROAD MAINTENANCE ARE PROVIDED TO THE BENEFIT  
 OF THE PARCELS AND THE STREET RIGHT-OF-WAY  
 LINE SHALL AND MAY INTO THE FINANCIAL LOT DRIVEWAY.

DEPARTMENT OF PUBLIC WORKS  
 APPROVED FOR STREET ALIGNMENT & LOCATION  
 12/15/64  
 DIRECTOR  
 APPROVED FOR BALTIMORE COUNTY HEALTH DEPARTMENT  
 12/15/64  
 BALTIMORE COUNTY HEALTH OFFICER  
 APPROVED FOR BALTIMORE COUNTY  
 12/15/64  
 DIRECTOR OF PLANNING & ZONING

**OWNER'S CERTIFICATE:**  
 THE REQUIREMENTS OF SECTION 63 TO 65,  
 ARTICLE 17 OF THE ANNOTATED CODE OF MARYLAND,  
 FIRST EDITION (TITLE, "CLEANS OF THE COURT, SUB-TITLE,  
 "CLEANS OF THE CIRCUIT COURTS") AS FAR AS THEY  
 RELATE TO THE MARKING OF THIS PLAT AND THE  
 SETTING OF MARKERS HAVE BEEN COMPLIED WITH.

**SURVEYOR'S CERTIFICATE:**  
 I, EUGENE F. RAPHEL, A REGISTERED PROFESSIONAL  
 SURVEYOR OF THE STATE OF MARYLAND, DO HEREBY  
 CERTIFY THAT THE LAND SHOWN HEREON HAS BEEN  
 LAYED OUT AND THE PLAT THEREOF PREPARED IN  
 ACCORDANCE WITH THE PROVISIONS OF THE LAWS  
 RELATING TO THE SUBDIVISION OF LAND KNOWING  
 HIS HOUSE BILL NO. 425 CH. 106 OF THE ACTS OF 1965  
 AND SUBSEQUENT ACTS AMENDATORY THEREOF.



PROPERTY OF  
**"THOMAS B. SHELTON"**  
 8TH ELECT. DIST. BALTIMORE COUNTY, MD.  
 Scale: 1"=100' Date: AUGUST, 1964

**E. RAPHEL & ASSOCIATES**  
 REGISTERED PROFESSIONAL LAND SURVEYORS  
 201 COURTLAND AVENUE  
 TOWSON, MARYLAND 21284

MDHA 30405

MSA SSA 1236-1062

2044